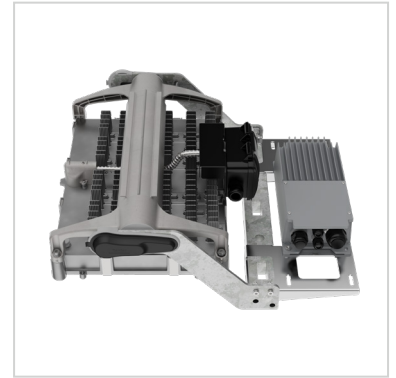


RAPTOR 4 600W



Optimal efficiency, flexibility, superior photometry for sports LED floodlighting, while excelling as the best in class for a circular economy

Raptor 4 600W, an Australian-designed and engineered high-performance floodlight, is tailored to deliver optimal lighting precisely where, when, and how it's needed in both indoor and outdoor sports venues.

RAPTOR 4 600W is dark sky friendly incorporating the flat glass concept for complete control of glare and obtrusive light and colour temperature of 4000K resulting in reduction in blue light.

Its adaptable mounting system, featuring a robust trunnion arm with multiple mounting slots and lateral slide adjustment makes RAPTOR 4 600W highly versatile for retrofit and refurbishments. The trunnion is compatible with both over and under slung mounting arrangements.

IP 66

IK 06



SPORTS



CAR PARKS



LARGE
AREAS



INDUSTRIAL
AREA
LIGHTING



TRANSIT
HUBS



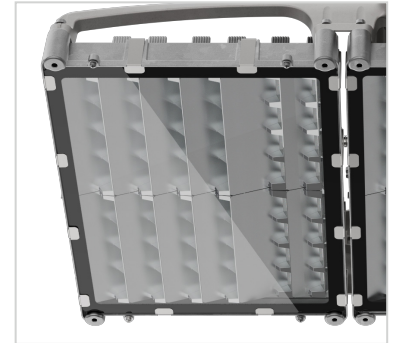
AIRPORT
APRONS

MAIN APPLICATIONS

- Sports
- Car parks
- Large areas
- Industrial
- Airport aprons
- Transit hubs

KEY ADVANTAGES

- Designed in Australia for Australian and New Zealand conditions
- High lumen efficacy over 150lms/w
- Precision reflector systems, designed to control spill light
- Asymmetric distribution, with four beam options
- Available in CCT 4000K, 5700K optional
- CRI 70
- Two driver models available:
 - Electronic DALI 2 IP66, can be installed remotely up to 300m or located on trunnion arm with optional mounting bracket
 - Compatible with Hybrid driver when operating two 600W floodlights in series. Can be installed remotely up to 2.8km, 240V and 415V
 - Compatible with Schröder ITERRA Sports Control System, when used with the Electronic DALI 2 Driver
- Durable LM6 grade die-cast aluminium body
- Unpainted housing with circular design at the forefront:
 - Modules can be replaced
 - Product can be disassembled at end of life with high resource recovery
- Optimal reliability with 5 year warranty
- All exposed cabling has bird proof conduit
- Supplied with bird spikes



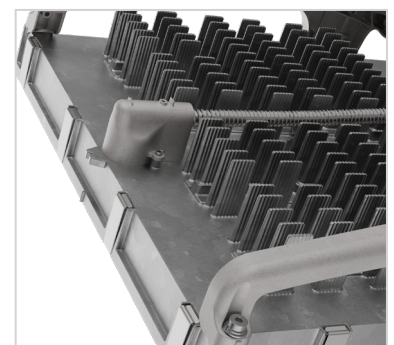
Precision optical design, controlling spill light



Colour coded caps to identify optics from the ground - A0 = White, A1 = Black, A2 = Red, A3 = Green



Adjustable lateral slot for mounting and aiming flexibility, particularly for retrofits



Die cast aluminium heat sink for excellent thermal management

GENERAL INFORMATION

Recommended installation height	12m to 20m 40' to 65'
Driver included	No
RCM Mark	Yes
ROHS compliant	Yes
Testing standard	AS/NZS 60598.1:2017

HOUSING AND FINISH

Housing	Die-cast LM6 aluminium frame and heat sink
Optic	High temperature vacuum metalised reflector
Protector	Tempered glass
Housing finish	Un-painted LM6 grade aluminium
Tightness level	IP 66
Impact resistance	IK 06

PERFORMANCE

Lumen efficacy	150lms/w
----------------	----------

ELECTRICAL INFORMATION

Electrical class	Class I
Nominal voltage	240V/415V – 50Hz/60Hz
Power factor (at full load)	>0.95
System wattage	1 module 600W
Surge protection (kV)	10kV
Electromagnetic compatibility (EMC)	AS/NZS CISPR15
Control protocol(s)	DALI-2 for electronic, 1-step/4-step and TRI Control (DALI/0-10V/Simple Switch) for Hybrid Gear
Associated control system(s)	Schröder ITERRA
Sensor(s)	Devices & sensors for smart city applications

OPTICAL INFORMATION

LED colour temperature	4000K
Colour rendering index (CRI)	> 70
Asymmetrical distributions	A0 Extra Narrow, A1 Narrow, A2 Medium, A4 Wide

OPERATING CONDITIONS

Temperature range from operation (Ta)	-20°C to + 40°C
---------------------------------------	-----------------

LIFETIME OF THE LEDS @ TA 40°C

All configurations	102,000h - L90
--------------------	----------------

DIMENSIONS AND MOUNTING

L x W x H (mm) 540 x 602 x 248

Weight (kg) 16.5

Aerodynamic resistance 0.101 (at tilt of 0°)
Windage (m²) 0.132 (at tilt of 14°)

Raptor with A1 hood:

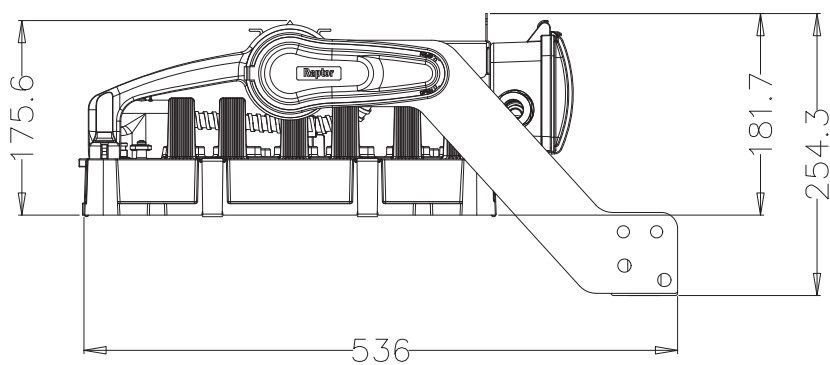
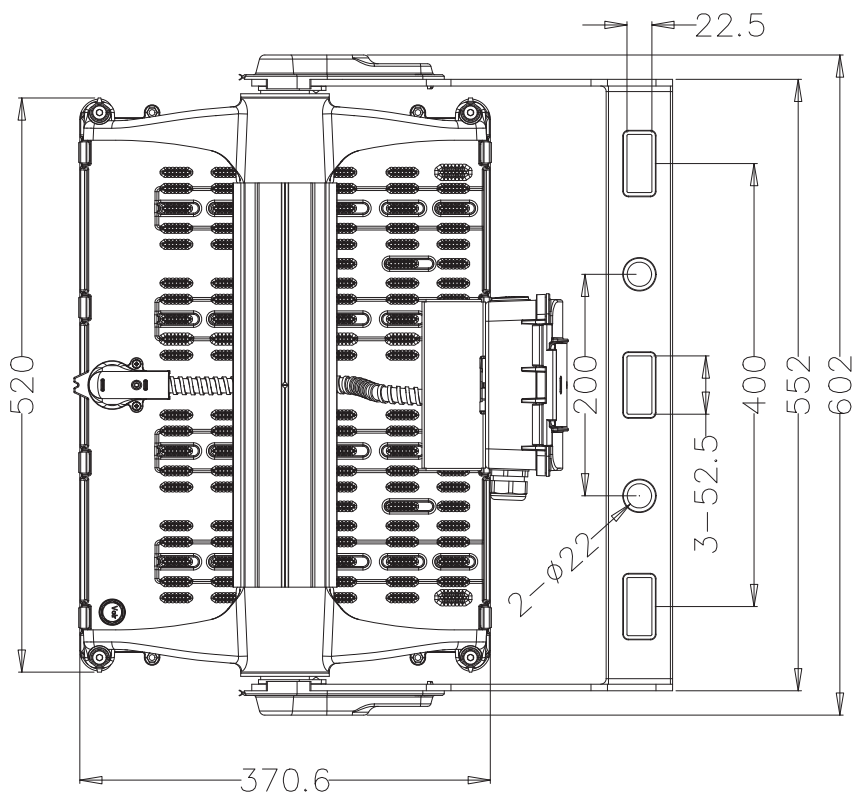
0° = 0.123

5° = 0.124

10° = 0.127

15° = 0.132

Mounting possibilities Galvanised trunnion arm for under and over slinging

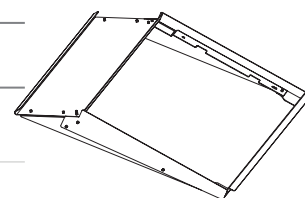




Product Code	Name	Beam Dist.	Colour Temp	System Power (W)
SR1A0G4-740	RAPTOR 4 600W A0 OPTIC CRI70 CCT4000K NO GEAR	Asymmetric A0 Extra Narrow	4000	600
SR1A1G4-740	RAPTOR 4 600W A1 OPTIC CRI70 CCT4000K NO GEAR	Asymmetric A1 Narrow	4000	600
SR1A2G4-740	RAPTOR 4 600W A2 OPTIC CRI70 CCT4000K NO GEAR	Asymmetric A2 Medium	4000	600
SR1A3G4-740	RAPTOR 4 600W A3 OPTIC CRI70 CCT4000K NO GEAR	Asymmetric A3 Wide	4000	600

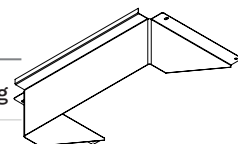
ACCESSORIES - RAPTOR 4 600W Hood Accessory

SR1APNHOODG4	RAPTOR 4 600W A0/A1/A2/A3 APRON HOOD KIT	L 538.4 x W 527.4 x H 106.5mm	2kg
--------------	--	-------------------------------	-----



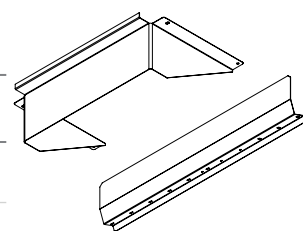
ACCESSORIES - BACK SHIELD

SRBACKSHIELDG4	RAPTOR 4 1200W/600W BACK SHIELD KIT	L 515 x W 415 x H 151mm	1.15kg
----------------	-------------------------------------	-------------------------	--------



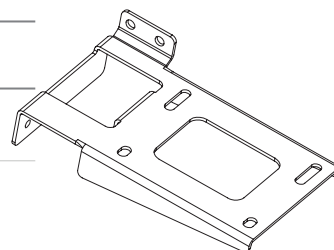
ACCESSORIES - SIDE AND BACK SHIELD KIT

SR1SIDESHIELDG4	RAPTOR 4 600W SIDE AND BACK SHIELD KIT	L 400 x W 415 x H 197mm	2.4kg
-----------------	--	-------------------------	-------



ACCESSORIES - DRIVER MOUNTING BRACKET

SRDRVBKTG4	RAPTOR 4 DRIVER MOUNTING BRACKET SET 600W/1200W	L 239 x W 145 x H 66mm	1.75kg
------------	---	------------------------	--------



CONTROL GEAR - ELECTRONIC DALI-2 DRIVER*

NFS-600S210BC	RAPTOR 4 600W ELECTRONIC DRIVER 2.1A	L 310 x W 145 x H 70mm	3.05kg
---------------	--------------------------------------	------------------------	--------



* For technical information and other control gear options, refer to the separate control gear product data and installation sheets.