

Schröder
Experts in lightability™

RAPTOR 4

Optimal efficiency with superior
optical control for sports floodlighting



2016

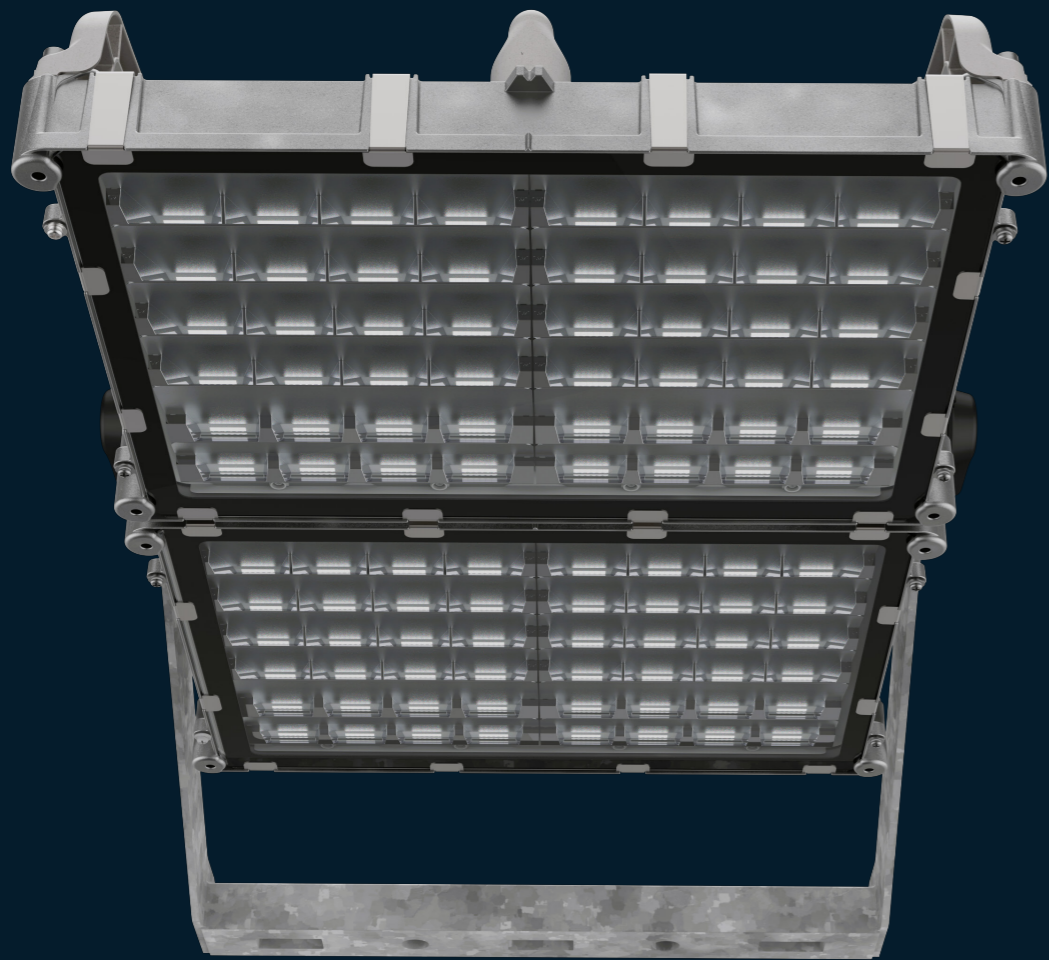
FIRST LAUNCHED
IN AUSTRALIA

More than the right light

Australian-designed RAPTOR LED floodlights made their debut in Australia and New Zealand back in 2016. Since then, more than 20,000 floodlights have been installed.

Schröder is dedicated to exploring the potential of light and is constantly pushing the boundaries of **technological innovation**. Our latest RAPTOR **provides superior optical performance to help customers reduce maintenance costs and carbon emissions.**

OVER
20,000
RAPTORS INSTALLED



Why RAPTOR 4?

- Designed in Australia for Australian and New Zealand conditions
- Raptor 4 is dark sky friendly, designed with a unique reflector system allowing for flat glass installation. Resulting in superior control of glare and obtrusive light
- Shield attachment options available for use in sensitive obtrusive light and CASA applications
- 4000K resulting in reduction in blue light
- High lumen efficacy over 150lms/w
- Two driver options available: Electronic DALI 2 IP66 and Hybrid
- Best-in-class for a circular economy with lower carbon emissions
- Long life time 102,000h L90
- Bring down installation and maintenance costs
- Easy integration with a smart lighting control system

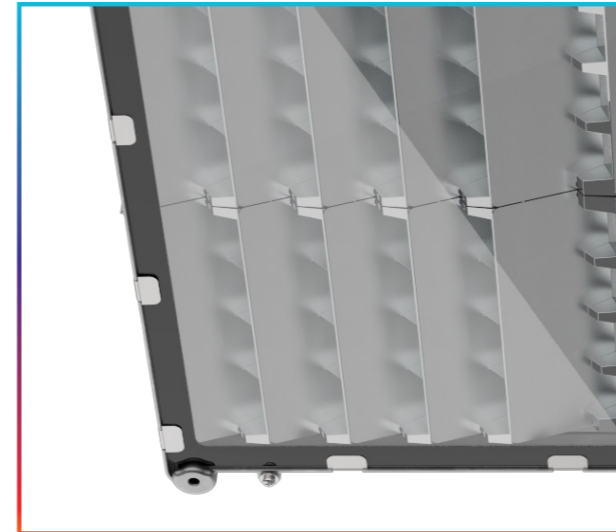


RAPTOR 4 turns **outdoor** sport areas into **safe, comfortable, sustainable and smart environments**.

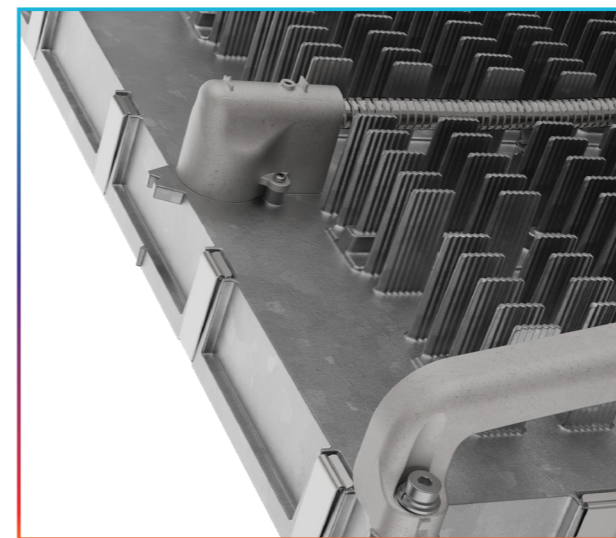
They deliver engaging experiences for the players and visitors and operational benefits for the sports club managers.

MAIN APPLICATIONS

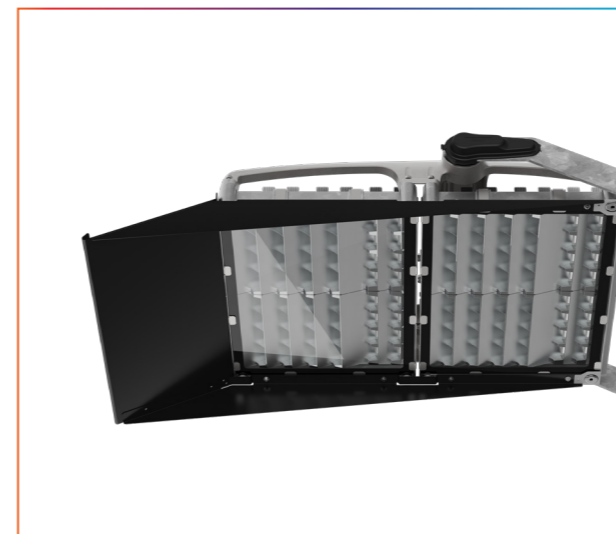
- Sports
- Car parks
- Large areas
- Industrial
- Airport aprons
- Transit hubs



Precision optical design,
controlling spill light



Die cast aluminium heat sink for
excellent thermal management



Shield attachment options
for obtrusive light and CASA
applications

More flexibility for perfect playing conditions

- Comply with Australian and New Zealand lighting standards and regulations - AS 2560.2:2021
- 1200W & 600W
- Lifetime of the LEDs @ TA 40°C 102,000h L90
- Asymmetric distribution, with four beam options - A0, A1, A2, A3
- All exposed cabling has bird proof conduit
- Supplied with bird spikes
- Optimal reliability with 5 year warranty

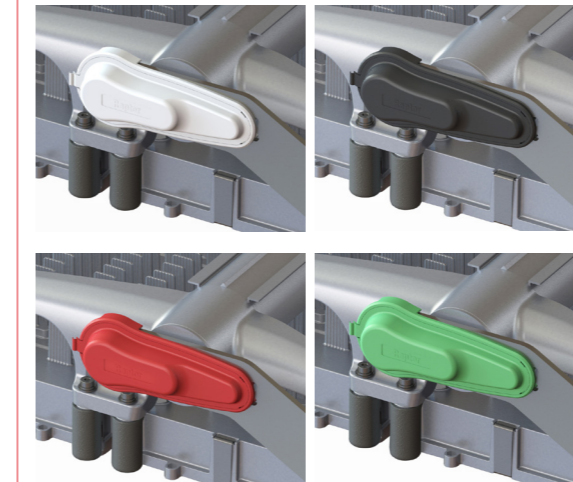


Smooth and easy installation process

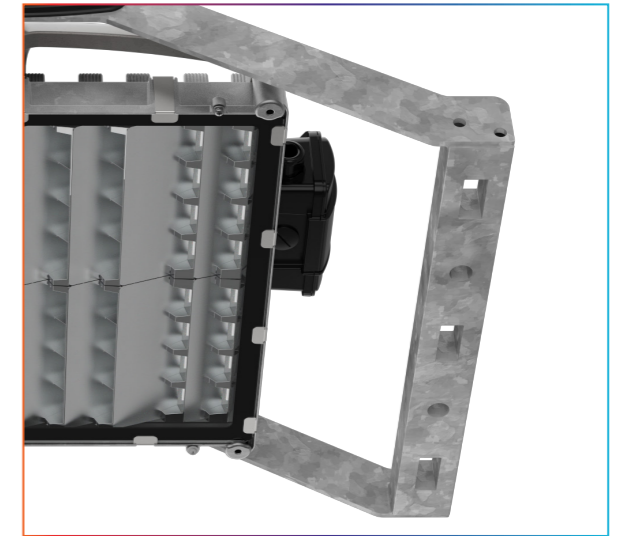
Installation made easier with a flexible trunion mounting system.

Installers, we make your job easy

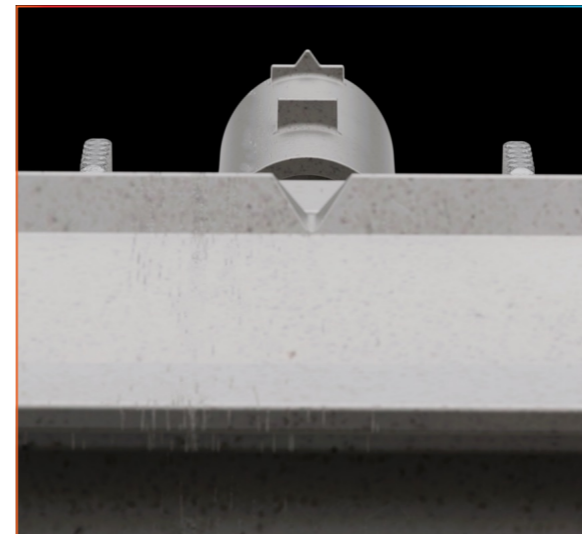
- Optimised weight and windage
- Simple on-site fine-tuning and adjustments



Colour coded caps to identify optics from the ground - A0 = White, A1 = Black, A2 = Red, A3 = Green



3 x slots to allow up 52.5mm adjustability which provides flexibility for retrofits/ refurbishments



Built-in aiming sight



Redesigned pivot mechanism upto 60mm lateral movement allowing for installation flexibility



The Circle LIGHT

Our luminaires are aimed to operate on-site for as long as possible, leading to a more sustainable world.

But now, we are going a step further with a more circular approach. The concept of circularity focuses on reducing the environmental burden through the optimisation of every material flow. In a circular economy, products are designed and built as part of a value stream where they will be used for as long as is feasible. Then, depending on their characteristics, they can be reused, refurbished, upgraded or recycled. Our Circle Light label aims assesses our luminaires based on 12 criteria covering all aspects of efficiency, ease of maintenance and disassembling and recycling capabilities.



RAPTOR 4 claims 4 stars

at the Circle Light assessment, not only due to its efficiency but also because of these circular highlights.

- > Best in class for a circular economy with unpainted natural raw finish
- > Packaging is fully recyclable and no use of plastic or foam
- > Dark sky friendly incorporating the flat glass concept for complete control of glare and obtrusive light
- > Colour temperature of 4000K resulting in reduction in blue light, in comparison to 5700K.
- > High-quality mechanical structure enabling IP 66 and IK 06 ratings
- > Circular design making it easier replace or repair modules
- > Easy to disassemble the product at end of life with highly recyclable materials
- > Long service life: designed to deliver efficiency, sustainability and safety



Light as it should

Many of Australia's mammals are active at night, and exposure to artificial light during nighttime can be detrimental to them. Aid in the conservation of Australia's mammals by refraining from illuminating areas where they rest, forage, or move through.

Limit light usage to essential needs and maintain low intensity. Warmer light is more favourable to people and animal natural cycles and they are less disruptive to these nocturnal animals.

The Schröder RAPTOR 4 is launched with 4000K colour temperature resulting in reduction in blue light, in comparison to 5700K. RAPTOR 4 also incorporates the flat glass concept for complete control of glare and obtrusive light.

Moreover, when integrated with Schröder ITERRA smart control, it not only lowers electricity expenses but also reduces carbon emissions by utilizing advanced control features and sensors to determine optimal times for turning lights on, off, or dimming them.



Make life EASY with the Schröder ITERRA control system



With the Schröder ITERRA smart sports lighting solutions* you benefit from:

- Quick and easy implementation
- Open technologies and standards
- Outstanding user experience
- Futureproof solution
- Cost effective control system
- Additional energy savings & increased lifetime of luminaires
- Remote and physical control, data monitoring and preventive maintenance

*Different packages are available to suit your specific needs

Dedicated
smartphone app



Dynamic scenarios
for shows,
entertainment and
non-sporting events



Schröder

Experts in lightability™