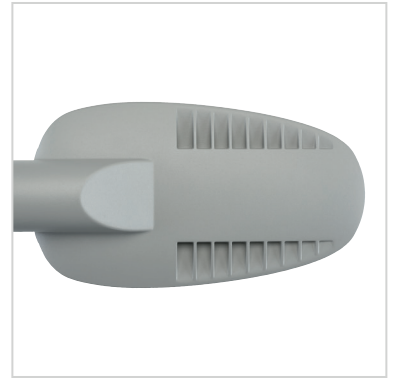
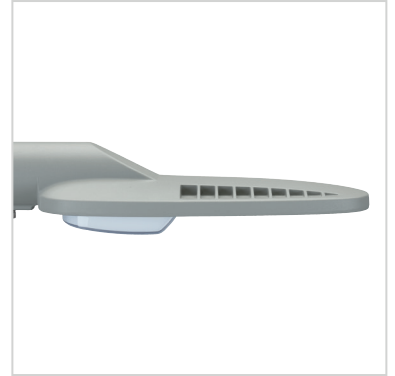


## SYLVANIA ZEPHYR



**SYLVANIA**

### High Quality with a Robust Build

The ZEPHYR provides a reliable solution in industrial facilities.

The new ZEPHYR LED luminaire is made from a high quality die-cast aluminium housing. Its robust build and IK09 and IP66 protection ratings provides for a perfect solution for industrial and commercial applications including walkways, security and perimeter lighting. The type I optic allows for spacings of up to 12m to achieve >40 lux average.

IP 66

IK 09



INDUSTRIAL  
HALLS &  
WAREHOUSES

## MAIN APPLICATIONS

- Industrial Halls & Warehouses
- Walkways
- Security Lighting
- Public Spaces

## KEY ADVANTAGES

- Energy efficient
- High grade UV resistant Polycarbonate lens design for durability and efficiency
- Type I optics to ensure efficient illumination of walkways and pathways
- Corrosion resistant powdercoated high pressure diecast aluminium for superior corrosion resistance
- IK09 High Impact Polycarbonate Visor
- IP66 Optical and gear chamber
- Stainless Steel fasteners
- Supplied with 4m flex and plug
- Suitable for high ambient temperatures of up to 50°C
- Wide operation voltage range of 100-277V AC 50/60Hz
- 10kV surge protector for additional protection from supply transients and surges
- Low dust accumulation design



IK09 low profile dark sky compliant visor



High grade pmma lens designed for durability and efficacy



High pressure diecast aluminium body with corrosion resistant powdercoat finish



IP66 gear and lens enclosure

**GENERAL INFORMATION**

Recommended installation height	2.4m to 6m   8' to 20'
Driver included	Yes
RCM Mark	Yes
ROHS compliant	Yes
Testing standard	AS/NZS60598.1:2017 AS/NZS60598.2.1:2014

**HOUSING AND FINISH**

Housing	Pressure diecast low copper content aluminium
Optic	Type 1M UV resistant PMMA Lens
Protector	High Impact UV Stabilised PMMA lens
Housing finish	UV resistant polyester powdercoat
Standard colour(s)	Grey RAL9022
Tightness level	IP66
Impact resistance	IK09
Vibration test	Compliant with modified IEC 68-2-6 standard (0.5G)

**PERFORMANCE**

Lumen efficacy	123lm/W
----------------	---------

**ELECTRICAL INFORMATION**

Electrical class	Class 1
Nominal voltage	100-240V - 50/60 Hz
Power factor (at full load)	0.95
Surge protection (kV)	10kV
Electromagnetic compatibility (EMC)	AS CISPR15:2017, EN61000-4-5

**OPTICAL INFORMATION**

LED colour temperature	4000K standard 3000K optional
Colour rendering index (CRI)	> 70

**OPERATING CONDITIONS**

Temperature range from operation (Ta)	-20°C to + 50°C
---------------------------------------	-----------------

**LIFETIME OF THE LEDS @ TA 40°C**

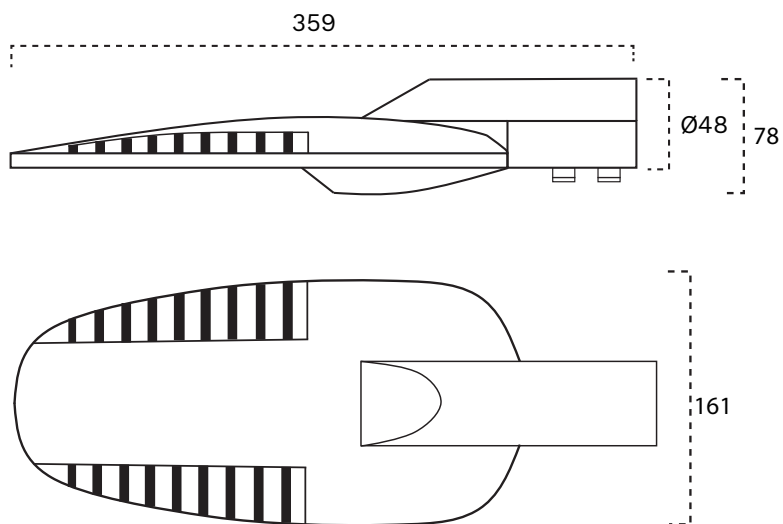
All configurations	50,000h - L70
--------------------	---------------

**DIMENSIONS AND MOUNTING : SINGLE MODULE**

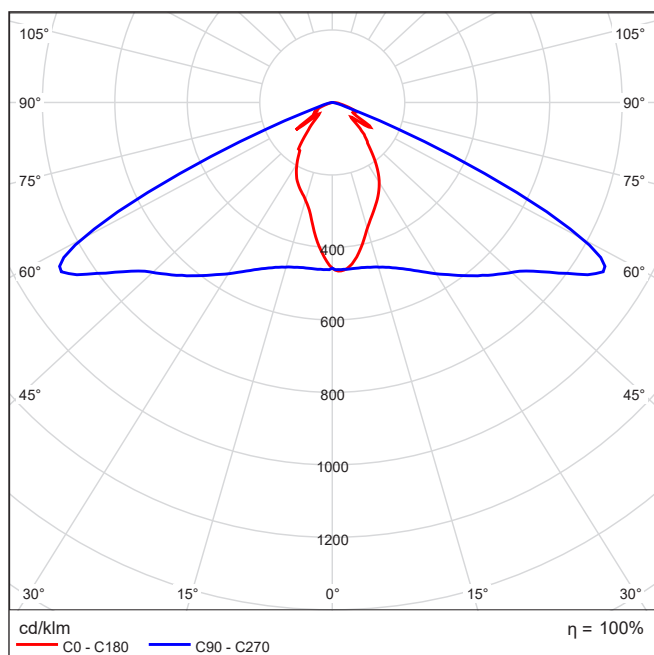
L x W x H (mm) 359 x 161 x 78

Weight (kg) 2

Mounting possibilities Side-entry, wall mount



**LIGHT DISTRIBUTIONS**





Product Code	Name	Photometric Distribution	Lumen Output	System Power (W)
0050077AU	Zephyr SML 3600lm 4K 1M CLI Grey	Type I	3600lm	30W